

chart

CARRIE SCHNEIDER
DEEP LIKE



Carrie Schneider, *Gossip / It is always world*, 2021
unique chromogenic print made in camera, approx. 25 x 20 in (63.5 x 50.8 cm)
on view at CHART

AT CANDICE MADEY
April 17 - May 29, 2021
opening Saturday, April 17, 12-6 PM

AT CHART
May 15 - July 2, 2021
opening Saturday, May 15, 12-6 PM

CHART and CANDICE MADEY are pleased to co-present *Deep Like*, a two-venue exhibition with new work by Carrie Schneider.

Schneider's work challenges the camera's presumed capacity for documentation and exactitude, employing multiple exposures, light bleeds and obstructions to express an associative collection of images and influences. Abstractions are comprised of images from the artist's own archive and from intimate and personal moments from her artistic life, including screenshots of her friends' work and social

chart

74 FRANKLIN ST
NEW YORK NY 10013
646 799 9319

CHART-GALLERY.COM

media feeds, and appropriations of art works that were formative to her ideas about art (Chantal Akerman, Pina Bausch, Francisco Goya, Sigmar Polke and Jeff Wall appear here)-affectionately referred to by the artist as her *poetic blazon*. Schneider works intuitively, often in the dark hours before sunrise, in a diaristic process akin to automatic writing. She repeats motifs ad infinitum until they are fully exhausted and a new exemplar emerges—one based not on a singular view, but one generated by unexpected commonalities and the affect of others.



Carrie Schneider, *Stereophile*, 2020
unique chromogenic print made in camera, approx. 25 x 20 in (63.5 x 50.8 cm)
on view at CANDICE MADEY

Works in *Deep Like* began with a technical challenge: to build a camera. Schneider constructed a camera from acrylic sheets, industrial grade plastic and a 300mm Rodenstock lens, and experimented with exposing existing images directly to photographic paper. The process allows ample space for failure and discovery—a shift in Schneider's work which previously originated with research and defined strategies for making images. The resulting photographs, each a unique print, share the aura of mystery often associated with early experiments in photography, but rediscovered using the visual

chart

74 FRANKLIN ST
NEW YORK NY 10013
646 799 9319

CHART-GALLERY.COM

vocabulary of social media, pop culture and art historical references.

The title of the show, *Deep Like*, reads like a hashtag and suggests the contemporary desire to express affection and interact with friends and colleagues. However, in practice Schneider's work digs deeper—offering us, the viewers, the residue of the artist's hand as it traces memories from a year in isolation, the longing for connection, and the relational-cultural value of art and the conversations it inspires.

Carrie Schneider (b. 1979, Chicago) is based in Brooklyn and Hudson, New York. She has presented her photographs and videos at the Museum of Contemporary Art, Chicago; the Pérez Art Museum Miami; The Andy Warhol Museum, Pittsburgh; The Art Institute of Chicago; and The Kitchen, New York; Kunsthall Charlottenborg, Copenhagen; the Finnish Museum of Photography, Helsinki; Galería Alberto Sendros, Buenos Aires; santralistanbul, Istanbul. Her work has been reviewed in The New York Times, ArtForum, VICE, Modern Painters, and The New Yorker. She received a Creative Capital Award, a Fulbright Fellowship, and attended the Whitney Museum of American Art's Independent Study Program and the Skowhegan School of Painting & Sculpture. Her work is in numerous public collections including The Art Institute of Chicago; Museum of Contemporary Photography, Chicago; Haggerty Museum of Art, Milwaukee; Centre Canadien d'Architecture, Montreal; Art in Embassy, Mbabane, Swaziland; University Galleries, Illinois State University, Illinois; DePaul University Public Collection, Chicago. She received an MFA from the School of the Art Institute of Chicago and a BFA from Carnegie Mellon University, Pittsburgh. Carrie serves on the boards of Iceberg Projects and A.I.M by Kyle Abraham.

In accordance to CDC guidelines and to ensure the health and safety of our visitors and staff, we ask that face coverings be worn and social distancing be practiced when visiting the gallery. [Reservations](#) are recommended, but not required.

For more information, please contact us at info@chart-gallery.com

chart

74 FRANKLIN ST
NEW YORK NY 10013
646 799 9319

CHART-GALLERY.COM

CHECKLIST (clockwise)



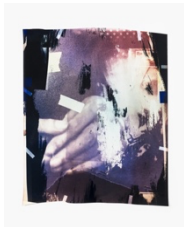
Carrie Schneider

full ashtray, 2021

unique chromogenic print made in camera

Image: approx. 25 x 20 inches (63.5 x 50.8 cm)

Framed: 29 1/2 x 24 inches (74.9 x 61 cm)
(CH575)



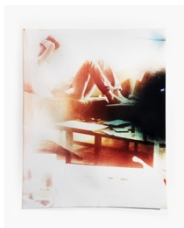
Carrie Schneider

I'll Do You In, 2021

unique chromogenic print made in camera

Image: approx. 25 x 20 inches (63.5 x 50.8 cm)

Framed: 29 1/2 x 24 inches (74.9 x 61 cm)
(CH581)



Carrie Schneider

Claire Danes, 2020

unique chromogenic print made in camera

Image: approx. 25 x 20 inches (63.5 x 50.8 cm)

Framed: 28 1/4 x 24 inches (73.4 x 61 cm)
(CH568)



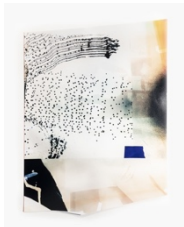
Carrie Schneider

married at the mall, 2021

unique chromogenic print made in camera

Image: approx. 25 x 20 inches (63.5 x 50.8 cm)

Framed: 28 7/8 x 24 inches (73.3 x 61 cm)
(CH584)



Carrie Schneider

Shit Sendoff, 2020

unique chromogenic print made in camera

Image: approx. 25 x 20 inches (63.5 x 50.8 cm)

Framed: 31 1/4 x 24 inches (79.4 x 61 cm)
(CH571)

chart

74 FRANKLIN ST
NEW YORK NY 10013

646 799 9319

CHART-GALLERY.COM



Carrie Schneider

Dump Your Boyfriend (and move to New York), 2021

unique chromogenic print made in camera

Image: approx. 25 x 20 inches (63.5 x 50.8 cm)

Framed: 29 1/2 x 24 inches (74.9 x 61 cm)

(CH573)



Carrie Schneider

RRT (Recycled Rosemarie Trockel), 2021

unique chromogenic print made in camera

Image: approx. 25 x 20 inches (63.5 x 50.8 cm)

Framed: 28 1/4 x 24 inches (71.8 x 61 cm)

(CH574)



Carrie Schneider

Hashface (he died first), 2021

unique chromogenic print made in camera

Image: approx. 25 x 20 inches (63.5 x 50.8 cm)

Framed: 28 1/4 x 24 inches (71.8 x 61 cm)

(CH583)



Carrie Schneider

Bianca (peach blazon), 2020

unique chromogenic print made in camera

Image: approx. 25 x 20 inches (63.5 x 50.8 cm)

Framed: 28 7/8 x 24 inches (73.3 x 61 cm)

(CH567)



Carrie Schneider

La Fin du monde, 2021

unique chromogenic print made in camera

Image: approx. 25 x 20 inches (63.5 x 50.8 cm)

Framed: 28 1/4 x 24 inches (71.8 x 61 cm)

(CH585)



Carrie Schneider

Loop of Boredom I, 2021

unique chromogenic print made in camera

Image: approx. 25 x 20 inches (63.5 x 50.8 cm)

Framed: 28 1/4 x 24 inches (71.8 x 61 cm)

(CH577)



Carrie Schneider

frank pussy, 2021

unique chromogenic print made in camera

Image: approx. 25 x 20 inches (63.5 x 50.8cm)

Framed: 28 1/4 x 24 inches (71.8 x 61 cm)

(CH578)



Carrie Schneider

Sky's Daughter, 2021

unique chromogenic print made in camera

Image: approx. 25 x 20 inches (63.5 x 50.8 cm)

Framed: 27 1/2 x 23 1/2 inches (69.8 x 59.7 cm)

(CH576)



Carrie Schneider

Hotter Cotter, 2020

unique chromogenic print made in camera

Image: approx. 25 x 20 inches (63.5 x 50.8 cm)

Framed: 28 1/4 x 24 inches (71.8 x 61 cm)

(CH565)



Carrie Schneider

Reactionary, 2021

unique chromogenic print made in camera

Image: approx. 25 x 20 inches (63.5 x 50.8 cm)

Framed: 28 7/8 x 24 inches (73.3 x 61 cm)

(CH579)



Carrie Schneider

Roberta (positive), 2021

unique chromogenic print made in camera

Image: approx. 25 x 20 inches (63.5 x 50.8 cm)

Framed: 28 1/4 x 24 inches (71.8 x 61 cm)

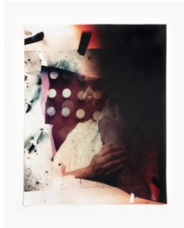
(CH580)

chart

74 FRANKLIN ST
NEW YORK NY 10013

646 799 9319

CHART-GALLERY.COM



Carrie Schneider

Martha (red fog), 2020

unique chromogenic print made in camera

Image: approx. 25 x 20 inches (63.5 x 50.8 cm)

Framed: 28 1/4 x 24 inches (71.8 x 61 cm)

(CH570)



Carrie Schneider

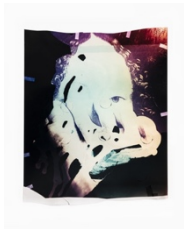
Pandemic as Portal, 2020

unique chromogenic print made in camera

Image: approx. 25 x 20 inches (63.5 x 50.8 cm)

Framed: 28 1/4 x 24 inches (71.8 x 61 cm)

(CH566)



Carrie Schneider

here is a head leaning on a wheel, 2020

unique chromogenic print made in camera

Image: approx. 25 x 20 inches (63.5 x 50.8 cm)

Framed: 28 7/8 x 24 in (73.3 x 61 cm)

(CH569)