

chart

David Aipperspach
Prologue to a garden dark
March 18 – April 30, 2022



David Aipperspach, *6-9 pm*, 2021, oil on canvas, 84 x 72 in (213.4 x 182.9 cm)

CHART is pleased to present *Prologue to a garden dark*, an exhibition of new work by David Aipperspach. Occupying the top floor of the gallery, the show will run from Friday, March 18th to Saturday, April 30th, with an opening reception on March 18th from 5-8pm.

Aipperspach is a painter drawn to moments where weirdness pokes through the quotidian. In this new series, he depicts quiet vignettes that capture the passage of time on a summer afternoon and evening, exploring how subtle shifts in memory can alter our perceptions of place.

Despite the commonplace characteristics of his subjects—a doorknob, a floor lamp, some patio chairs—narratives begin to emerge from prolonged looking. Particularities of the compositions range from rational to illogical.

chart

74 FRANKLIN ST
NEW YORK NY 10013
646 799 9319

CHART-GALLERY.COM

chart

Sharply rendered details share surfaces with upending perspectival incongruities. Together they reveal a world with unexpected ambiance and drama looming within the familiar.

The six large paintings in the exhibition represent distinct intervals of time indicated by inset “clocks”: numbered bands of colors observed in the sky and surrounding landscape at each hour. The clocks serve as indices that mark each painted scenario with a duration of time beyond just a single suspended moment. In *5-8 pm*, for example, the viewer experiences an indoor and outdoor space simultaneously thanks to the shifting transparency of flickering light on a windowpane. The 7 pm clock is crisply defined, while the 8 pm bands begin to dissolve, emulating the sun-spattered exterior. Just as a change in illumination would alter one’s ability to peer through the glass, these clocks diagram the diminishing available light.

Aipperspach composed the large paintings by referencing observational studies and photographic sources combined with improvised and invented elements. The small paintings were conceived as flashbacks to memories of inhabiting the large works, depicting select aspects from shifted perspectives. Varied processes throughout the works elicit a range of approaches to mark-making and spatial construction, at times representing credible physical realities and in other instances simulating the perceptual slippage of memory, distraction, and unease.

David Aipperspach is a painter and educator based in Philadelphia. He earned an MFA in Painting from the Rhode Island School of Design and a B.A. in Landscape Architecture from the University of California, Berkeley. He is currently an Assistant Professor at Ursinus College. His work has been shown in a variety of gallery and academic contexts, including the Woodmere Art Museum, Anderson Ranch Art Center, RISD Museum, West Chester University, UC Berkley, Berman Museum of Art, Newport Art Museum, Pilot Projects, Fjord Gallery, Nancy Margolis Gallery, and elsewhere.

chart

74 FRANKLIN ST
NEW YORK NY 10013
646 799 9319

CHART-GALLERY.COM

chart

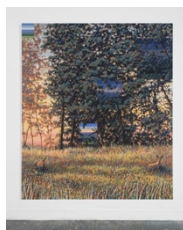
74 FRANKLIN ST
NEW YORK NY 10013

646 799 9319

CHART-GALLERY.COM

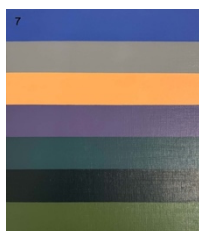
DAVID AIPPERSPACH
PROLOGUE TO A GARDEN DARK
MARCH 18 - APRIL 30, 2022

CHECKLIST



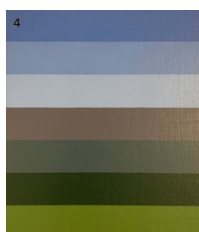
David Aipperspach

6-9 pm, 2021
oil on canvas
84 x 72 in
213.4 x 182.9 cm
(CH782)



David Aipperspach

7 pm, 2021
oil on canvas over panel
10 x 8 1/2 in
25.4 x 21.6 cm
(CH828)



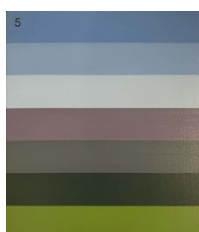
David Aipperspach

4 pm, 2021
oil on canvas over panel
7 x 6 in
17.8 x 15.2 cm
(CH825)



David Aipperspach

4-7 pm, 2021
oil on canvas
84 x 72 in
213.4 x 182.9 cm
(CH780)



David Aipperspach

5 pm, 2021
oil on canvas over panel
10 x 8 1/2 in
25.4 x 21.6 cm
(CH826)

chart

74 FRANKLIN ST
NEW YORK NY 10013

646 799 9319

CHART-GALLERY.COM



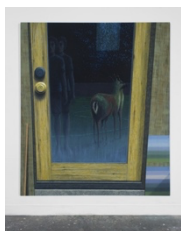
David Aipperspach

5-8 pm, 2021
oil on canvas
84 x 72 in
213.4 x 182.9 cm
(CH781)



David Aipperspach

Sundial 1, 2022
oil on canvas
36 x 40 in
91.4 x 101.6 cm
(CH784)



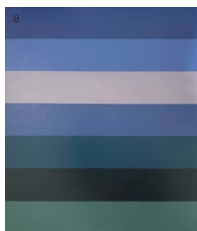
David Aipperspach

5-6 pm, 2021
oil on canvas
84 x 72 in
213.4 x 182.9 cm
(CH778)



David Aipperspach

6 pm, 2021
oil on canvas over panel
7 x 6 in
17.8 x 15.2 cm
(CH827)



David Aipperspach

8 pm, 2021
oil on canvas over panel
14 x 12 in
35.6 x 30.5 cm
(CH829)



David Aipperspach

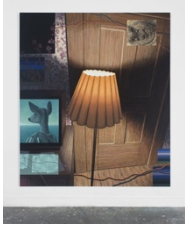
7-10 pm, 2021
oil on canvas
84 x 72 in
213.4 x 182.9 cm
(CH783)

chart

74 FRANKLIN ST
NEW YORK NY 10013

646 799 9319

CHART-GALLERY.COM



David Aipperspach

8-11 pm, 2021

oil on canvas

84 x 72 in

213.4 x 182.9 cm

(CH779)



David Aipperspach

Sundial 2, 2022

oil on canvas

36 x 40 in

91.4 x 101.6 cm

(CH804)



David Aipperspach

Sun Chart, 4-11 pm, 2021

oil on canvas

24 1/2 x 24 in

62.2 x 61 cm

(CH796)