

chart

SHONA McANDREW

Rose-Tinted Glasses

February 23 — April 1, 2023
Opening February 23, 6 – 8 pm



Shona McAndrew, *In Too Deep*, 2022, acrylic on canvas, 68 x 54 inches (172.7 x 137.2 cm).
Courtesy the artist and CHART. Photo by Neighboring States.

CHART is pleased to present *Rose-Tinted Glasses*, a solo exhibition by Shona McAndrew, her third at the gallery. Occupying both floors of the gallery, *Rose-Tinted Glasses* will debut ten paintings and a new larger-than-life-sized sculpture. There will be an opening reception on Thursday, February 23, from 6–8 pm, and the exhibition will remain on view through April 1, 2023.

Following her two previous solo shows at CHART, *Muse* and *Haven*, in which McAndrew created intimate portraits of sitters sourced from the artist's personal life or social media, *Rose-Tinted Glasses* finds the artist turning toward self-reflective imagery. Here McAndrew presents paintings of herself and her partner, in various states of repose and undress, luxuriating in each other's presence. Drawing inspiration still from classical compositions by Old Masters, McAndrew's newest paintings imbue scenes with a certain comfortability and warmth.

chart

74 FRANKLIN ST
NEW YORK NY 10013
646 799 9319

CHART-GALLERY.COM

chart

As Charity Coleman writes in the catalogue essay, “Shona’s new paintings loosely summon an art historical lineage, borrowing from canonical works by Gentileschi, Caravaggio, Bernini, and Velazquez. [...] They are downtempo homages to sensate connectivity, and there is a quiet drama there.”

Physicality is at the forefront of these works — lovers’ limbs lounge in nude embraces: hands grip flesh, albeit with reassuring tenderness. The unabashed nature of these bodily reveals shows an artist comfortable in their own skin. As with past portrait sitters, McAndrew is subverting the authority of the art historical canon to empower her subjects, only in *Rose-Tinted Glasses*, the artist grants herself a sense of hard-won self-acceptance and autonomy.

The exhibition will be accompanied by a fully illustrated catalogue featuring an essay by Charity Coleman.

ABOUT SHONA McANDREW

Shona McAndrew (b. 1990) was born in Paris and lives and works in Philadelphia. She holds an MFA in Painting from the Rhode Island School of Design and a BA in Psychology and Painting from Brandeis University. She has had solo exhibitions at Art Omi, Ghent, NY (2021), The Abroms-Engel Institute of the Visual Arts at UAB, Birmingham, AL (2021), the Moore College of Art and Design, Philadelphia, PA (2020); CHART, New York, NY (2019, 2021, 2023); and Spring/Break Art Show, New York, NY (2019). She has also exhibited in group shows at Nassima Landau, Tel Aviv, IL; the New York Academy of Art, New York, NY; wallspaceplease, Dubai, UAE; Newchild Gallery, Antwerp, BE; Kunstraum Potsdam, Potsdam, DE; Lyles & King, New York, NY; Taymour Grahne Projects, London, UK; Stems Gallery, Brussels, BE; Mindy Solomon Gallery, Miami, FL; Allouche Benias Gallery, Athens, GR; and Museum of Sex, New York, NY.

chart

74 FRANKLIN ST
NEW YORK NY 10013
646 799 9319

CHART-GALLERY.COM

chart

74 FRANKLIN ST
NEW YORK NY 10013

646 799 9319

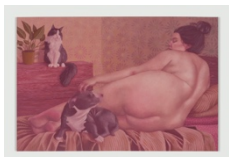
CHART-GALLERY.COM

Shona McAndrew: *Rose-Tinted Glasses*

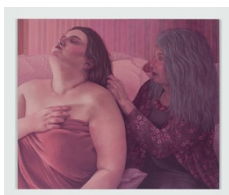
Upstairs Gallery



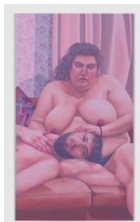
In Too Deep, 2022
acrylic on canvas
68 x 54 inches (172.7 x 137.2 cm)



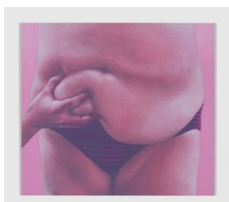
Bedtime, 2023
acrylic on canvas
48 x 72 inches (121.9 x 182.9 cm)



My Mom and I, 2023
acrylic on canvas
56 x 62 inches (142.2 x 157.5 cm)



Movie Night, 2022
acrylic on canvas
78 x 44 inches (198.1 x 111.8 cm)



Hold Me, 2022
acrylic on canvas
34 x 38 inches (86.4 x 96.5 cm)

chart

74 FRANKLIN ST
NEW YORK NY 10013

646 799 9319

CHART-GALLERY.COM



Hold You, 2022
acrylic on canvas
34 x 38 inches (86.4 x 96.5 cm)



Oh, To Be Loved, 2023
acrylic on canvas
66 x 56 inches (167.6 x 142.2 cm)

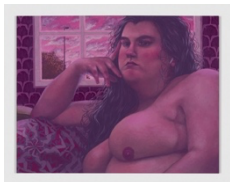


Pieta, 2022
acrylic on canvas
62 x 56 inches (157.5 x 142.2 cm)

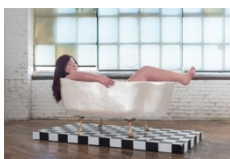


Hold You Tight, 2022
acrylic on canvas
86 x 42 inches (218.4 x 106.7 cm)

Downstairs Gallery



Shona McAndrew
Sunset at Home, 2022
acrylic on canvas
28 x 36 inches (71.1 x 91.4 cm)



Shona McAndrew
Mollie, 2022-2023
paper mâché, acrylic, steel, foam, epoxy clay plywood, twine
Sculpture: 41 x 34 1/2 x 74 inches (104.1 x 87.6 x 188 cm)