

# chart

## Jennifer Coates: *Edge Effects*

May 3 - June 22, 2024



Jennifer Coates, *Pan and Syrinx with Dandelions Butterflies and Goldfinches*, 2023  
acrylic on canvas, 72 x 72 in, 182.9 x 182.9 cm. Courtesy the artist and High Noon.

**High Noon opening: May 3, 5–7 pm**

**CHART opening: May 3, 6–8 pm**

CHART and High Noon galleries are pleased to present *Edge Effects*, a collaborative exhibition of new paintings by Jennifer Coates that will span both gallery spaces at 74 Franklin Street in TriBeCa and 124 Forsyth Street in the Lower East Side.

“Edge Effects” is an ecological term that refers to the sometimes problematic changes in biodiversity where different habitats converge. These transitional zones are called ecotones: animal/vegetable environments in flux, like ditches, forest edges, marshes and grasslands. The ecotone provides a metaphorical through line for Coates’s current paintings, in which micro-climates of imagery collide. Zones of color, marks, and depicted elements aggregate and are collaged together, creating a hybrid sense of place.

Coates uses acrylic and spray paint—synthetic chemicals—to represent the landscape, emphasizing the toxicity that now runs through most organisms. Despite this pervasive chemical presence, her paintings present an ecofeminist belief in the possibility of restoring the self through hyper connection with nature.

# chart

At the edges of shapes, halos and heightened optical effects take the viewer in and out of spatial logic. She repeatedly depicts plants that flourish in poor soil, found at edges between cultivation and wildness. These ditch weeds are ubiquitous in rural Pennsylvania where Coates works in the summer. Painting them has become a way to reconcile with invasive plant species. She anchors archetypes such as Diana, Pan, Dionysus, and the Maenads to the woodlands where she has spent much of her life, incorporating local wildlife like common birds and butterflies. The butterflies, for example, pollinate as well as “puddle”—a behavior that extracts minerals from mud, carrion, blood, and sometimes tears, signaling the edge between vitality and rot. In Coates’s paintings they also feed on the remains of Classical sculpture.

Portals appear as entrances to bunkers, caves, ruins, and passage tombs. Rocks are a new pictorial element for Coates that provide a further engagement with the materiality of paint. Structures and imagery are built up and broken down through her painterly process and go in and out of presence, at the edge of sense.

A full color, limited edition catalog will accompany the exhibition.

## **About the Artist**

Jennifer Coates is an artist working in Brooklyn, NY and Lakewood, PA. She is the 2021 recipient of the John Koch Art Award from the American Academy of Arts and Letters, a 2021 NYFA Award in painting, a 2019 Fellowship at the Civitella Ranieri Foundation, and a Sharpe Walentas Studio residency (2018-2019). Recent solo shows include *Untitled Art Miami 2022* with High Noon, Miami, FL; *Para Pastoral* at Pamela Salisbury Gallery, Hudson, NY; *Lesser Gods of Lakewood, PA* at High Noon, NYC; and *Pagan Forest*, West Chester University. Recent group shows include *Wonderland*, curated by Elizabeth Denny and Katie Alice Fitz, Aicon Gallery, New York, NY; *And So Did Pleasure Take the Hand of Sorrow and They Wandered Through the Land of Joy*, a group show centered around the drawings of Marsden Hartley, Bates College Museum of Art, Lewiston, ME; *Psychedelic Landscape* at Eric Firestone Gallery, NYC, and *Post Pop Landscapes* at Acquavella Galleries in NYC and Palm Beach, FL, curated by Todd Bradway. Her work has been written about in *Hyperallergic*, *BOMB Magazine*, the *Brooklyn Rail*, *Art Critical*, the *Huffington Post*, *Smithsonian Journeys*, and *Art News*, among other publications.

JENNIFER COATES: *EDGE EFFECTS*



**Jennifer Coates**

*Auspiciam with Goldfinches, Ram, Ditch Weeds and Rocks, 2024*

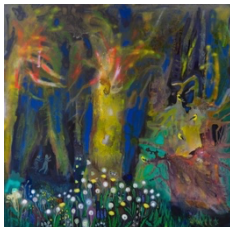
acrylic and spray paint on canvas  
60 x 72 in (152.4 x 182.9 cm)  
(CH1372)



**Jennifer Coates**

*Yew, Leopards, Poppies, 2023*

acrylic and spray paint on canvas  
60 x 72 in (152.4 x 182.9 cm)  
(CH1374)



**Jennifer Coates**

*Pan and Syrinx with Dandelions Butterflies and Goldfinches, 2023*

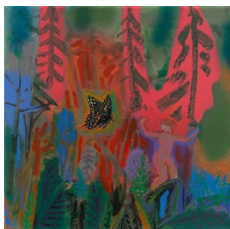
acrylic and spray paint on canvas  
72 x 72 in (182.9 x 182.9 cm)  
(CH1352)



**Jennifer Coates**

*Auspiciam with Sparrows, Poppies, Ruin, and Crouching Figure, 2024*

acrylic and spray paint on canvas  
48 x 60 in (121.9 x 152.4 cm)  
(CH1375)



**Jennifer Coates**

*Fern, 2017*

acrylic and spray paint on canvas  
12 x 12 in (30.5 x 30.5 cm)  
(CH1399)

chart

74 FRANKLIN ST  
NEW YORK NY 10013

646 799 9319

CHART-GALLERY.COM



**Jennifer Coates**

*Dug Up Heads and Wild Allium*, 2024  
acrylic and spray paint on canvas  
24 x 30 in (61 x 76.2 cm)  
(CH1378)



**Jennifer Coates**

*Bacchanal*, 2024  
acrylic and spray paint on canvas  
72 x 96 in (182.9 x 243.8 cm)  
(CH1370)



**Jennifer Coates**

*Tiger, Bather, and Bunke*, 2024  
acrylic and spray paint on canvas  
16 x 20 in (40.6 x 50.8 cm)  
(CH1382)



**Jennifer Coates**

*Two Coyotes and Ruin*, 2024  
acrylic and spray paint on canvas  
12 x 12 in (30.5 x 30.5 cm)  
(CH1383)



**Jennifer Coates**

*Hands, Ram, Ditch Weeds, Butterflies,  
and Rocks*, 2024  
acrylic and spray paint on canvas  
48 x 60 in (121.9 x 152.4 cm)  
(CH1376)